



A Comprehensive Approach  
to Assessments for  
Children and Adolescents

# Testimonials

“Having read the assessment report, I was blown away at how extensive and in-depth it was, especially the ‘Recommendations’ section. I felt as though I was able to fully grasp my situation and your suggestions gave me the motivation to change things for the better...  
Thank you for your help and I appreciate you completing the report so early”

Anon

“[My child’s Psychologist at Vivamus] is amazing. She is that rare combination of great professionalism and full dedication...Her fantastic personality, always kind and caring, makes it easy for child to trust her.”

Parent of a child who had an assessment at Vivamus

“I truly recommend [my child’s] therapist [at Vivamus]. She is a highly skilled professional who brings both passion and care to her work. She supported my teenage daughter for several months when her dyslexia was diagnosed, helping her not only manage her challenges but also control her emotions, leading to improved relationships with family and friends. We will always be grateful for [her Psychologist’s] professional expertise, delivered with such a personal touch.

Parent of a 15-year-old girl

## Overview of Assessments for Children and Adolescents

### What is an assessment and why would my child need one?

An assessment is a structured and comprehensive process designed to evaluate specific aspects of an individual's functioning. The term “assessment” in this context typically refers to an educational assessment (e.g. to determine if there is a specific learning difficulty such as dyslexia), a developmental assessment (e.g. for Autism or ADHD) and/or a neuropsychological assessment (e.g. to explore specific aspects of functioning such as memory). Your psychologist will guide you as to what is needed.

If you are considering an assessment for your child, it is likely because you, a healthcare professional, or a teacher believe that your child’s challenges and/or strengths may be better understood through a formal assessment. The insights gained can lead to a clearer picture of your child’s needs and help guide appropriate support, both at home and in school.

### What is the outcome of an assessment?

Our comprehensive assessments not only determine whether your child meets specific diagnostic criteria (e.g., ADHD, Autism, Dyslexia) but also provide actionable, tailored recommendations. These are designed to provide you, your child, and your child’s school with strategies to support your child’s development and success. The value of our assessments goes beyond a diagnosis – the report we provide is a detailed roadmap, outlining practical strategies for intervention at home and in school. Additionally, we offer an optional feedback session with your child’s school to ensure that recommendations are clearly communicated and implemented effectively.

### Defining features of assessments at Vivamus

At Vivamus, we adhere to **international gold standards** in diagnostic assessments, ensuring that our process is **thorough** and **accurate**. Our team of highly qualified clinical psychologists and clinical neuropsychologists **brings years of specialised experience** to each assessment, using the latest evidence-based assessment tools adhering to international guidelines (such as the UK NICE Guidelines).

For assessments like Autism (ADOS), **two expert psychologists independently rate the results**, providing an added layer of accuracy and insight. This approach ensures that every aspect of your child’s needs is carefully considered.

While this **comprehensive and meticulous process** does take time, it is essential to the quality of the outcomes we provide. Our assessments are tailored and deeply thoughtful, helping to ensure your child receives the right support.

## Assessment process overview

### 1. Screening session



The process begins with a screening session, where one of our experienced psychologists (a Clinical Psychologist or Clinical Neuropsychologist) will discuss your child's challenges and strengths, as well as any relevant background information. Based on this conversation, we will determine which specific assessments are needed. Our fee for the initial screening session is 1020 AED

### 2. Comprehensive assessment



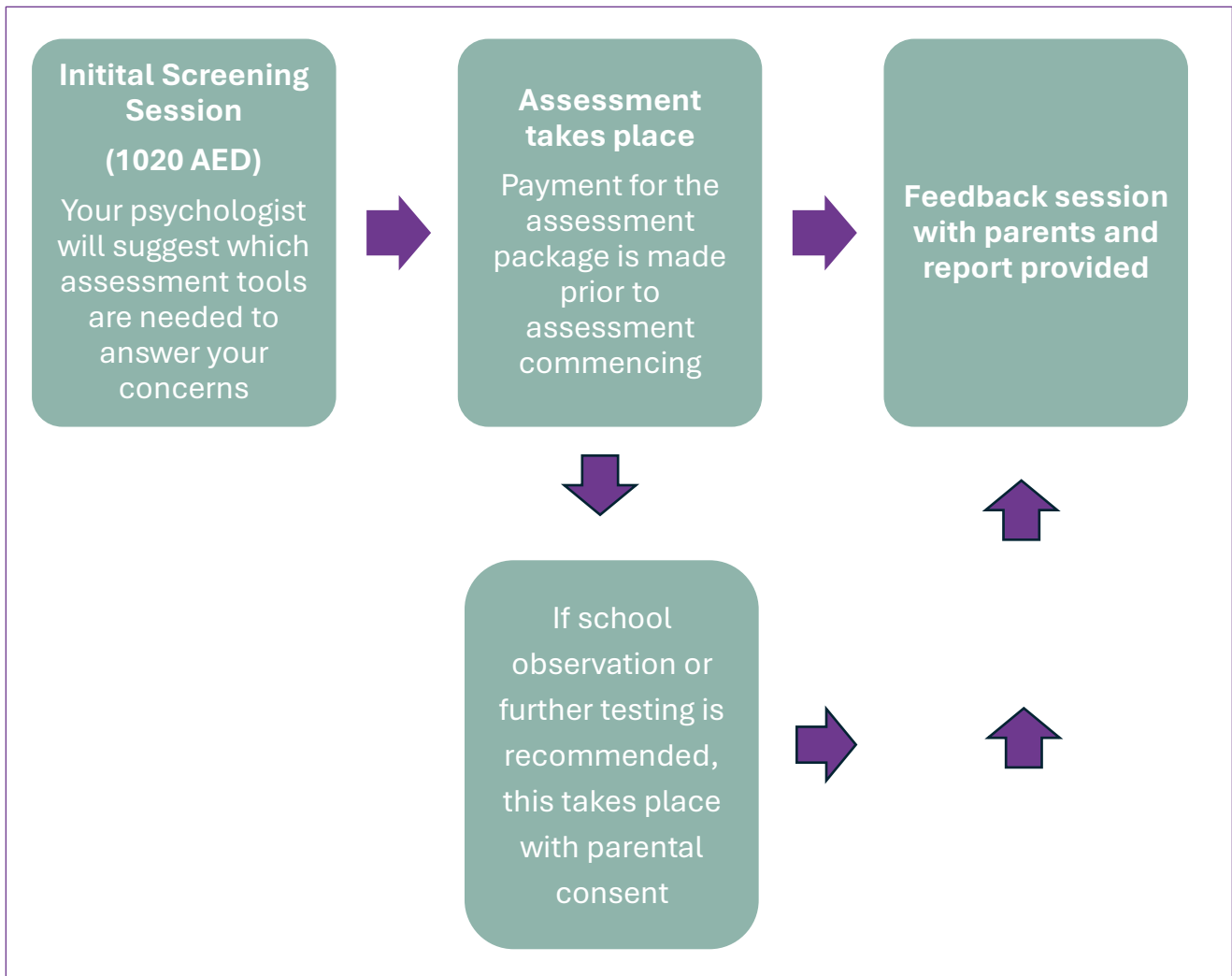
Once we've agreed on the necessary assessment(s), the process moves into a comprehensive phase of data collection and analyses. This includes direct testing, clinical observation and gathering input from multiple sources to ensure a well-rounded assessment. We liaise with your child's school, sending detailed questionnaires to key educators and parents to better understand your child's behavior and needs in different environments. Additionally, we carefully review any prior assessment reports to build a complete picture of your child's strengths and challenges. We analyse all data collected from questionnaires, school liaison, parents' input and direct testing to form a comprehensive and tailored report, offering a clear understanding of your child's needs and guiding next steps.

### 3. Feedback and recommendations



Following the assessment, we provide you with a detailed report and schedule a feedback session. Our psychologist will meet with you to discuss the outcome of the assessment and will share the report with you. Our report includes not only the diagnosis (if applicable) but also tailored recommendations for home and school support. You may also request a feedback session with your child's school to ensure that the recommendations are implemented effectively.

## Assessment process overview



## Assessment packages and fees

Referral Question	Assessment Package Required	Fee
Does my child have ADHD?	ADHD Assessment	6,000 AED
Is my child Autistic?	ASD (ADOS) Assessment	7,500 AED
Does my child have dyslexia or dyscalculia? (i.e. a specific learning difficulty).	Educational Assessment	10,000 AED
Is my child gifted?	Educational Assessment	10,000 AED
Is there a difference between what my child is achieving at school and what they are capable of?	Educational Assessment	10,000 AED
Does my child have a learning disability?	Cognitive Assessment	6,000 AED
How does my child's brain injury impact his or her learning?	To be determined during screening session	
Other neurological concerns	To be determined during screening session	

## Additional assessments and services

In some cases, a comprehensive understanding of your child's needs may require more than one assessment. For example, both an ADHD and an Autism Assessment may be necessary to address different concerns. We ensure that our process is flexible and can be adapted to meet your child's needs. In cases where additional assessments or services are required, we offer them at a reduced rate.

If more than one assessment or additional services are needed, the following fees apply:

Additional Services and Assessments	Fee
School observation	1530 AED
ADHD Assessment	5,000 AED
ASD (Autism) Assessment	6,500 AED
Educational Assessment	9,000 AED
Cognitive Assessment	5,000 AED
School feedback session online (30 mins)	500 AED

## Health insurance coverage

Health insurance coverage varies depending on your provider. We operate on a pay-and-claim basis and we suggest you check with your health insurance company whether the assessment is covered and if a referral from a Psychiatrist or other medical professional is required. The screening session is billed as an initial psychology appointment and is often covered though please do check with your own provider.

## Do I need to bring my child to the screening session?

You are welcome to bring your child if you wish, but it is not required. The screening session primarily involves gathering background information and our psychologists can typically determine the appropriate course of action by discussing your child's history and current challenges with you.

## Where will the assessment take place?

Most of the assessment process will take place at our clinic. However, we can also conduct assessments at your child's school if preferred, as long as suitable arrangements can be made with the school's inclusion department. The ADOS assessment takes place at our clinic as it requires specialised materials that we can't take with us into schools. The ADOS can be conducted online for older adolescents.

## Booking an assessment

Please contact our reception team to schedule a screening session for an assessment with one of our experienced psychologists. You can reach us via email at [hello@vivamus.me](mailto:hello@vivamus.me) or by phone on 04 4403844.